

# PUREAIRO DSC 120ES

## APPLICATION

Increased moisture in the house can cause increased growth of mold, mildew and dust mites; which has been proven to cause serious respiratory problems and skin allergies. Increased moisture level provide fungi with the best environment for fungi growth cause wood and item to the house to decay.

## KEY DESIGN FEATURES

- Capacity:
  - 1) 60 L/Day, AHAM
  - 2) 150 L/Day, Saturation
  - 3) Size for: 3,000 Sq. Ft.
- WiFi controller: HVAC Remote System.  
(The App will be Launched in December 2019)
- Outlet: 254mm big diameter air outlet, focused dehumidifying.
- Draining: Condensate pump.
- Supper COP: 3.5 L/KWH.

## OVERVIEW

We at PureAiro are have dedicated our lives to helping you combat high humidity levels, the DSC 120ES unit is one of the best dehumidifiers in the market today. With a power capacity of extracting over 100 L, you are guaranteed a long-term fix to all your humidity issues.

The DSC 120ES is the perfect dehumidifier for your crawl space, basement or whole house, where most humidity issues are experienced. Equipped with a powerful condensate pump and a pipe, all the extracted water is pumped out of the house and poured out away the house.

## ADDITIONALL FEATURES

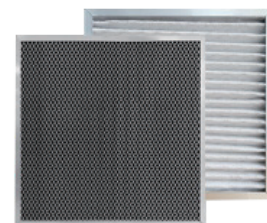
- Fully operational at Low temperatures.
- Easy access to the main board for easy maintenance.
- Design to stimulate air flow in spaces with air flow issues.
- Pipe drainage for the extracted water pumps out by the condensate pump.
- Filter for air purification.
- Full water protection.
- Epoxy powder coating.



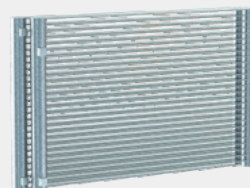
Wrinkle free tube



Pump



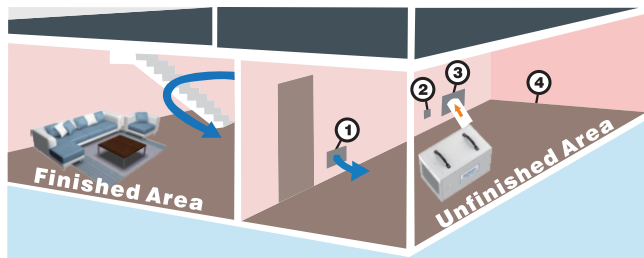
MERV-1, MERV-10 Filter



Microchannel

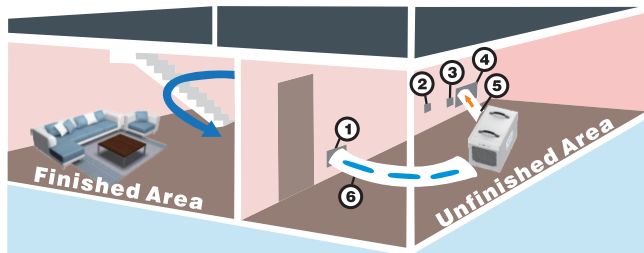


## INSTALLTION OF A PUREAIRO DSC 120ES WITH A SUPPLY KIT ONLY



1. Passive Return Vent
2. Remote Control(mounts on opposite Wall in Finished Area,Energize the sensor on Remote Control)
3. Supply Grill
4. Supply/Discharge Duct Work

## INSTALLTION OF A PUREAIRO DSC 120ES WITH A SUPPLY AND RETURN KIT



1. Return Grill
2. Remote Control(Mounts on opposite Wall in Finished Area,Energize the sensor on Remote Control)
3. Optional Wall Mount Dehumidistat(mounts on opposite wall in finished area)
4. Supply Grill
5. Supply/Discharge Duct Work
6. Return/Intake Duct Work



- Place the PureAiro DSC 120ES in the unfinished area of the basement near a drain access (condensate will be drained out via gravity).
- Connecting the Duct Tube on Collar, supply dry air from the dehumidifier to a large and open area in the finished section of the basement.
- Place a return grill 1 passive vent on the other side of the wall that separates the finished and unfinished areas. This will allow circular air flow go through the basement.
- The passive grill will prevent the unfinished room from being placed under a negative pressure and also allow the dehumidifier to focus on keeping the unfinished area dry.
- The Remote Control has the normal retome function, to insulate the noise of unit and also can be used at the Sensor Switch. You can choose the humidity sensor from the unit and Remote Control.
- Be sure to keep all doors open in the basement to help proper air circulation(bedrooms, bathrooms,etc.)

## APPLICATIONS

 Crawlspace

 Sports

 Shops/Bars

 Hotel/Motel

 Offices

 Laboratories

 Museums

 Restaurants

 Water Damage

 Basements

 Storage Areas

 Computer Rooms

## FEATURES

CE, CETL	✓
Compressor Type	Rotary
More Thorough, And More Quick	✓
Ducting options	✓
Condensate Pump	✓
Easy handling	✓
Water Full protection	✓
Environmental R4 10A Refrigerant	✓
Automatic humidistat control	✓
Memory Starting	✓
Epoxy Powder Coating	✓
Continuous Model	✓
HVAC Remote System	✓
Remote Control	✓
Low Temperature	✓

## SPECIFICATIONS

Power	230V / 50Hz
Approved for commercial use	Yes
Size limit	Not over 3,300 sq. ft
Air flow	350 CFM
Installation type	Portable
Remote control	Yes
Display type	Digital.
Sound level	<60 DBA
Draining	Condensate pump
Compressor type	Rotary
Defrosting control system	Auto Defrosting
Bypass air sensor	Yes.
Memory starting	All set settings remain the same even after a restart
Automatic humidistat control	Yes.
Easy handling	Plug and play design-easy to operate
Weight	81.5 lbs (37 Kgs)
Dimensions	600 x 360 x 430mm

**PureAiro**

Address: Berlin, Germany.

Web: [www.pureairo.com](http://www.pureairo.com)

Email: [sales@pureairo.com](mailto:sales@pureairo.com)

Tel: +44(20) 81247965